

CAREX[®]

ITEM# FGB31600 0000 + FGB31700 0000

Toilet Seat Elevator with Handles



 **Please read all instructions before assembly or use.**

Questions, problems or missing parts?
Before returning, contact Compass Health Brands customer service:

800-526-8051 | CAREX.COM

WARNINGS

INDICATIONS FOR USE:

A toilet seat elevator is intended to increase the height of the seating surface and can be used by persons with decreased strength or mobility.

This device is intended for a single user **ONLY**.

CONTRAINDICATIONS:

For safety reasons, people with balance disorders should **NOT** remain without supervision when using this device. User **MUST** be able to maintain even weight distribution while lowering and rising from device and while seated.

This device **MUST NOT** be used by individuals whose feet **DO NOT** touch the floor when seated, as appropriate balance on the device will not be possible.

SAVE THESE INSTRUCTIONS. This sheet MUST accompany the device with each use.

WARNINGS:

- **DO NOT ATTEMPT TO ADJUST OR OPERATE THE TOILET SEAT ELEVATOR WITHOUT READING ALL INSTRUCTIONS CAREFULLY.**
- Inspect all parts for shipping damages before assembly. If there is shipping damage – **DO NOT USE**. Contact your dealer/carrier for further instructions.
- If you **DO NOT** understand these instructions, contact a healthcare dealer or technical professional before attempting to install or use the device.
- Users that are unable to understand or follow these instructions and warnings or have limited physical capabilities should be supervised or assisted while using the toilet seat elevator.
- This toilet seat elevator has a weight limit of 250 lbs (113.4 kg). **ALWAYS** observe the weight limit on the labeling of your toilet seat elevator.
- Use the toilet lift only for the purpose for which it was designed. Compass Health Brands is **NOT** responsible in any way for any misuse of the toilet seat elevator, or for injuries or damage caused as a result of it.
- Check that all labels are present and legible. Replace if necessary.
- **DO NOT** use this device if your feet cannot make contact with the floor when in a seated position, as this will change the weight distribution and stability of the device, which can result in serious injury.
- Check fit and tightness of the toilet seat elevator to the bowl and all bolts and knobs at least weekly to ensure that the toilet seat elevator is secure and safe to use. **NEVER** use the toilet seat elevator if any looseness in the assembly or fit to the toilet bowl is noticed, as serious injury may result.
- It is recommended that a toilet safety frame or permanently installed wall mount grab bar is used in addition to the toilet seat elevator. Discuss your needs with your health care provider.
- It is recommended that metal bolts be used in the installation of the toilet seat elevator as plastic bolts wear out quickly which could result in serious injury.
- **DO NOT** use the toilet seat elevator if wobbly, unstable, or not level. **ALWAYS** be sure that the seat is secure and stable before using. Failure to comply with all product warnings may result in serious injury.
- **WARNING:** User **MUST** maintain even weight distribution while lowering and rising from device and while seated. Not doing so can result in tipping of the device and falls/serious injuries.
- **DO NOT** drop full body weight when lowering onto device as this could cause serious injury or damage to the device. Gently lower body weight when sitting onto the device.
- This product is **NOT** suitable for use as a grab rail and/or stability aid while transferring to or from the toilet seat.
- **NEVER** use the toilet seat elevator on top of an existing toilet seat.
- Sit on and leave seat from front, not from side. Make sure you have your balance before releasing your grasp from the toilet seat elevator to stand.
- This product will **NOT** fit all commode types. Be sure that the unit has been installed correctly, fits properly and is stable before use. If seat can rock from side to side, **DO NOT USE**.
- **DO NOT** stand, kneel or climb on the toilet seat elevator.
- **DO NOT** let children play on or operate the toilet seat elevator.
- Be sure that the user's weight is centered on the device during use. **NEVER** lean, reach or twist torso from side to side as injury may occur.
- The arms are for providing minimal balance assistance when getting on and off the seat. **DO NOT** attempt to use the arms to support body weight during transfer, as this may result in failure of the unit and serious injury.
- **WARNING: NEVER** use device without the arms properly installed as this could cause serious injury or damage to the device.

**FAILURE TO USE COMMON SENSE AND HEED THE ABOVE WARNINGS FURTHER INCREASES RISK OF SERIOUS INJURY.
USE AT YOUR OWN RISK AND WITH APPROPRIATE AND SERIOUS ATTENTION TO SAFE OPERATION. USE CAUTION.**

Assembly / Operating Instructions

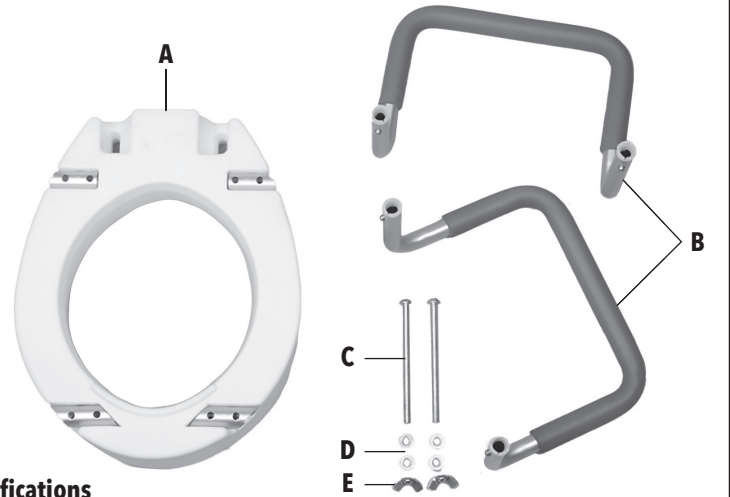
INSTRUCTIONS FOR USE:

- ⚠ WARNING:** This device is **NOT** intended to bear full body weight on the handles.
- ⚠ WARNING:** User **MUST** maintain even weight distribution while lowering and rising from device and while seated. Not doing so can result in tipping of the device and falls/serious injuries.
- ⚠ WARNING:** If the device is unable to be securely installed (device shifts left to right or up/down lifting from bowl), **DO NOT USE**. Different commode styles may require alternate seating devices.
- ⚠ WARNING:** It is recommended that metal bolts be used in the installation of the toilet seat elevator as plastic bolts wear out quickly which could result in serious injury.

1 Remove Packaging and Check Parts

- Remove the toilet seat elevator from all packaging including tape, cardboard and plastic.
- To avoid risk of suffocation to children or animals, dispose of the plastic bags correctly.
 - If you **DO NOT** understand the manual, contact your dealer for a complete explanation of the instructions, cautions and warnings. Otherwise injury may result.
 - If any parts are missing or damaged, **DO NOT** attempt to use.

	Description	QTY
A	Toilet Seat Elevator	1
B	Handles	2
C	Bolts	2
D	Washers	4
E	Wing Nut	2



FGB31600 0000 Specifications

Dimensions: 3.5" (H) x 18"- 20" (W) x 18.9" (D) | Product Weight: 3.9 lbs | Weight Capacity: 250 lbs

FGB31700 0000 Specifications

Dimensions: 3.5" (H) x 18"- 20" (W) x 17.32" (D) | Product Weight: 3.6 lbs | Weight Capacity: 250 lbs

2 Install Handles

NOTE: Handles are marked for right and left

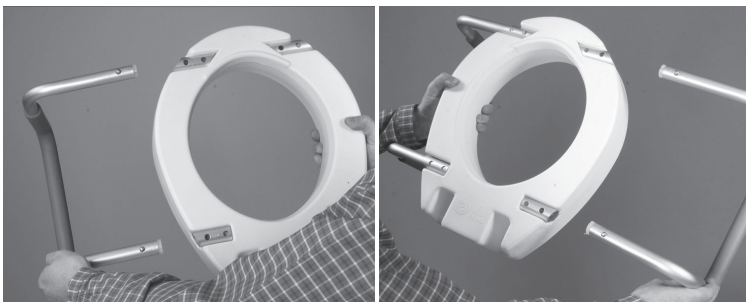
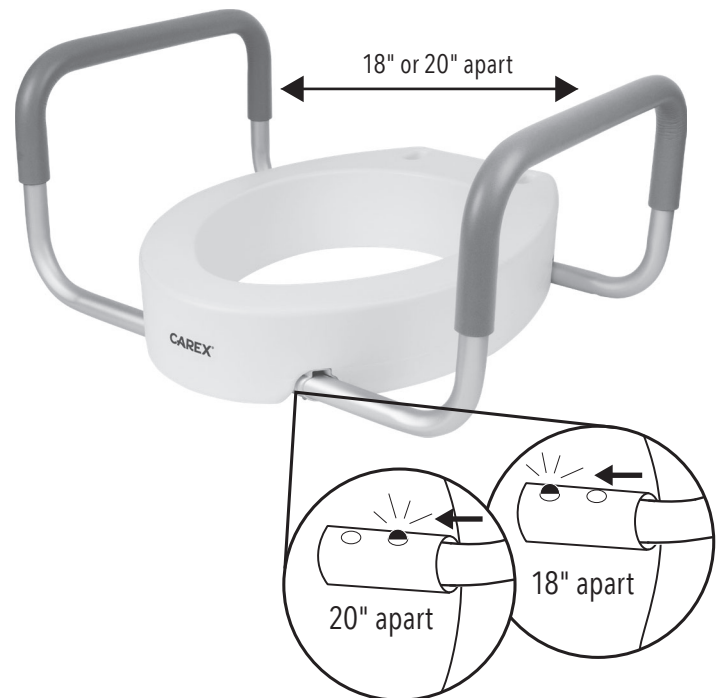
To assemble handles:

- Place one handle at a time into the tubes on the raised toilet seat (the detent buttons on the handle should be facing out, away from the toilet seat.)
- Depress the detent buttons on the handle while sliding the handle into position. You will hear "audible clicks" when the buttons are positioned properly. (You will see the detent buttons pop through the outermost position holes.)
- Repeat process for the other handle.

To remove handles:

- To remove the handles, depress the detent buttons while pulling out on the handles.

- The Handles can be adjusted to either be 18" or 20" apart.
- To adjust, push the detent button and pull the handles. For 18" - the detent button should be in the furthest hole. For 20" - the detent button should be in the closest hole.
- You should hear an "audible click" after adjusting the handles before use.



Assembly / Operating Instructions

3 Remove existing toilet seat and lid from toilet

NOTE: For most toilets, you will need to reach behind and underneath toilet to unscrew the nut while holding screw with screwdriver.



4 Position Toilet Seat Elevator on toilet bowl

- Position toilet seat elevator on rim of toilet bowl and center.

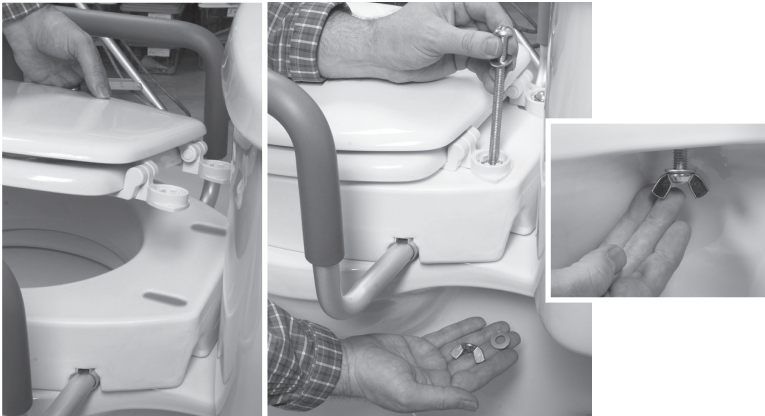


⚠ WARNING

ATTENTION: The four foam pads packaged with device are to be placed on the toilet seat elevator, underneath of user's toilet seat bumpers. The pads reduce indentation from toilet seat bumpers as seen in the photo.

5 Secure Toilet Seat Elevator to toilet

- Place original toilet seat and lid on top of Toilet Seat Elevator.
- Use Bolts and Washers provided to attach original seat, lid and toilet seat elevator to bowl. Secure with Wing Nuts provided.



6 Using Toilet Seat Elevator

- Check for secure fit before using product.
- User's weight should be centered over toilet seat.



7 Cleaning and Maintenance

⚠ WARNING: The lack of care and maintenance may cause serious injury. Your device should be regularly inspected for signs of damage or wear and tear.

- Check fit and tightness of the toilet seat elevator to the bowl and all bolts and knobs at least **WEEKLY** to ensure that the toilet seat elevator is secure and safe to use. **NEVER** use the toilet seat elevator if any looseness in the assembly or fit to the toilet bowl is noticed, as serious injury may result.
- Use damp cloth and mild soap to clean the toilet seat elevator. Ensure seat and handles are completely dry before use.

CAREX[®]

Questions, problems or missing parts?

Before returning, contact Compass Health Brands customer service:

800-526-8051 | CAREX.COM

Retain this manual for future use.

COMPASSHEALTH

Manufactured for: Compass Health Brands Corp.
6753 Engle Rd., Middleburg Heights, OH 44130
www.compasshealthbrands.com
800.376.7263 • Made in China
42-FGB31600 0000_FGB31700 0000_03 © 2025